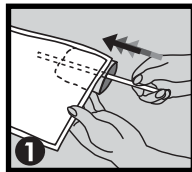
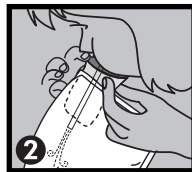


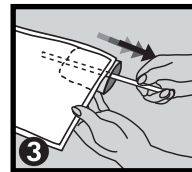
INFLATE



Insert straw into valve.



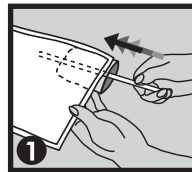
Blow air into pillow to desired firmness.



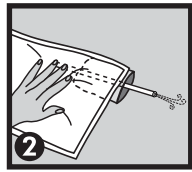
Remove straw. Valve will self seal.

• For best results inflate using only 3-4 puffs of air filling to approx. 50% of capacity

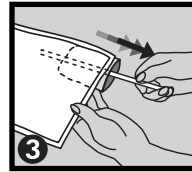
DEFLATE/ADJUST



Insert straw into valve.



Press air out of pillow.



Remove straw. Valve will self seal.